



# experience true. magic!

*Virtuosos & you.*  
**6 programs.**  
**23 concerts.**  
**14 venues.**

**true**  
**concord**  
*voices & orchestra*



2016-17 CONCERT SEASON









# Music of the Four Elements

*Featuring True Concord Choir and Chamber Players,  
and Catherine Hedberg, mezzo-soprano*

Earth, water, air, fire. Mother Earth is the honoree for True Concord's season opener. *In the Beginning*, Aaron Copland's resounding choral work, depicts the wonder and awe of the creation story. This program also includes Eric Whitacre's *Water Night*, Stephen Paulus's *The Water is Wide*, and works by Johannes Brahms and others, all inspired by the natural world.

**Thursday, October 13, 7:30pm**

Scottish Rite Temple, downtown Tucson

**Friday, October 14, 7:00pm**

Desert Hills Lutheran Church, Green Valley

**Saturday, October 15, 2:00pm**

Tohono Chul Performance Garden, northwest Tucson

**Sunday, October 16, 3:00pm**

Grace St. Paul's Episcopal Church, Tucson









# Bach's *Magnificat*

*Featuring True Concord Choir, Orchestra  
and Soloists*

The exuberant trumpet calls that open this celebrated work take liturgical music into a new and joyous realm. Bach's setting of the ancient text depicts the exultant moment when Mary shares with her cousin the news of her forthcoming child. This is one of Bach's most glorious works. Also on the program: Handel's *The King Shall Rejoice*, Pärt's *Cantus in Memoriam Benjamin Britten*, and the Tucson premier of Vignieri's *The Tides*.

**Thursday, November 17, 7:30pm**

St. Alban's Episcopal Church, east Tucson

**Friday, November 18, 7:00pm**

Lutheran Church of the Risen Savior, Green Valley

**Saturday, November 19, 7:30pm**

Catalina Foothills High School, Tucson

**Sunday, November 20, 3:00pm**

Grace St. Paul's Episcopal Church, Tucson











# Christmas Lessons and Carols by Candlelight

*Featuring True Concord Choir and Soloists,  
Organ and Harp*

Each year, Music Director Eric Holtan reimagines this unique holiday tradition of favorite and new music of the season performed by candlelight in some of the area's most beautiful churches. The mystery and joy of the season are captured in these concerts like none other.

**Thursday, December 8, 7:30pm**

Episcopal Church of the Apostles, Oro Valley

**Friday, December 9, 7:00pm**

St. Francis Episcopal Church, Green Valley

**Saturday, December 10, 7:30pm**

St. Philip's in the Hills Episcopal Church, Tucson

**Sunday, December 11, 3:00pm**

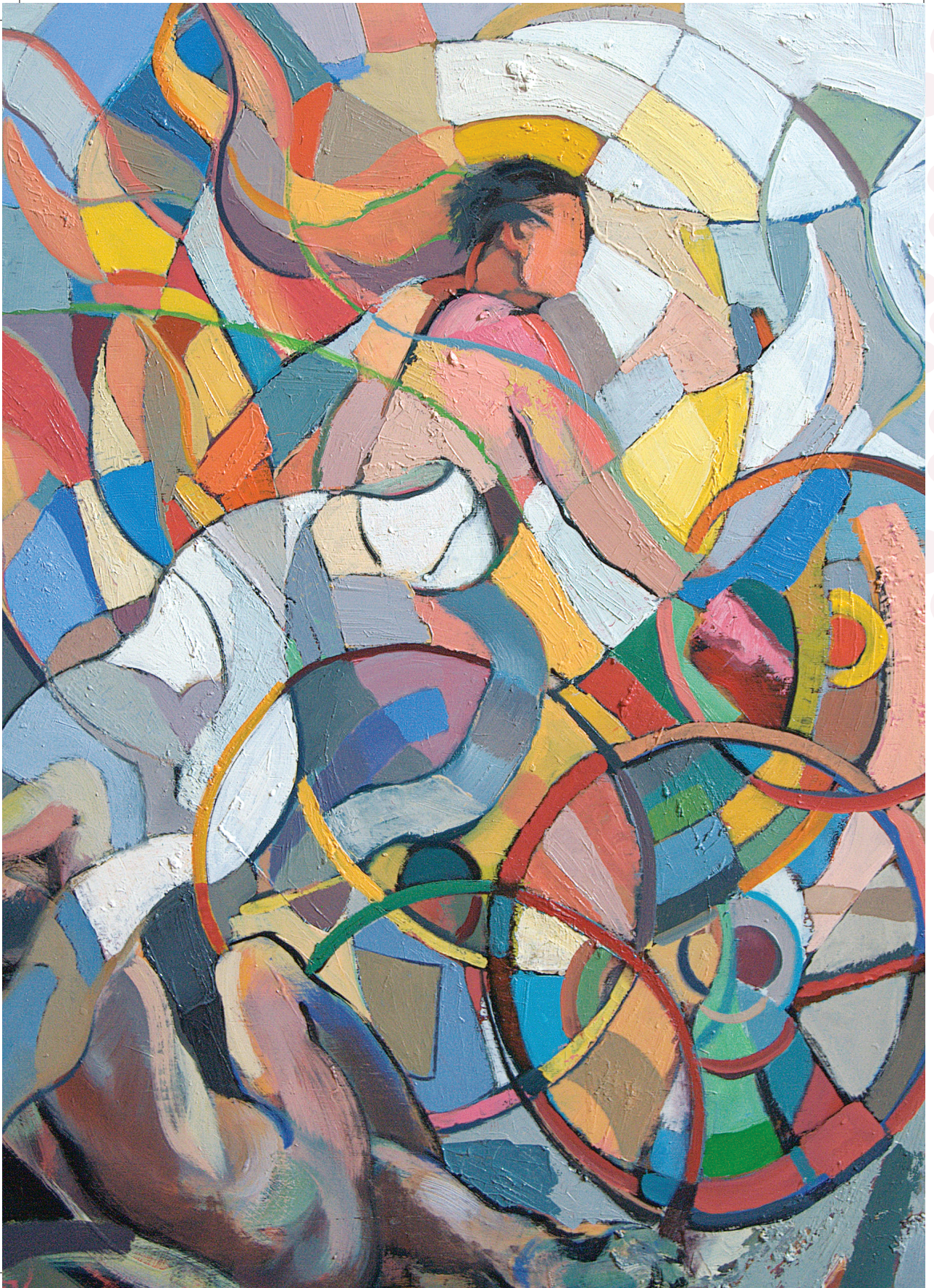
St. Philip's in the Hills Episcopal Church, Tucson

**Sunday, December 11, 7:30pm**

St. Alban's Episcopal Church, east Tucson











# Mendelssohn's *Elijah*

*Featuring True Concord Choir and Orchestra,  
Arizona Choir, and Richard Paul Fink, baritone*

Mendelssohn's greatest musical achievement features thirteen vocal soloists, a full symphony orchestra and chorus. True Concord is joined by University of Arizona's Arizona Choir, and GRAMMY award-winning baritone Richard Paul Fink sings the title role. Among the work's most vivid episodes, Elijah raises a dead child, ends a drought by commanding rain and challenges the followers of Baal to win the souls of the Israelites. The *Arizona Daily Star* describes this concert as "arguably the cornerstone of the 2017 Tucson Desert Song Festival."

**Friday, January 27, 7:30pm**

Catalina Foothills High School, Tucson

**Saturday, January 28, 7:00pm**

Valley Presbyterian Church, Green Valley

**Sunday, January 29, 3:00pm**

Catalina United Methodist Church, Tucson











# Monteverdi's Vespers

*Featuring True Concord Choir and Soloists, and  
Tesserae Early Music Ensemble*

“The Baroque starts here,” is how Music Director Eric Holtan summarizes this seminal work. “Vespers” refers to the centuries-old tradition of evening prayers, but in creating a work of monumental scale, Monteverdi includes both tranquil prayerful moments and ecstatic outbursts of absolute joy. In partnership with Arizona Early Music Society, the iconic Vespers of 1610 utilizes sackbuts, cornettos, recorders and other rare period instruments.

**Friday, February 24, 7:00pm**

Valley Presbyterian Church, Green Valley

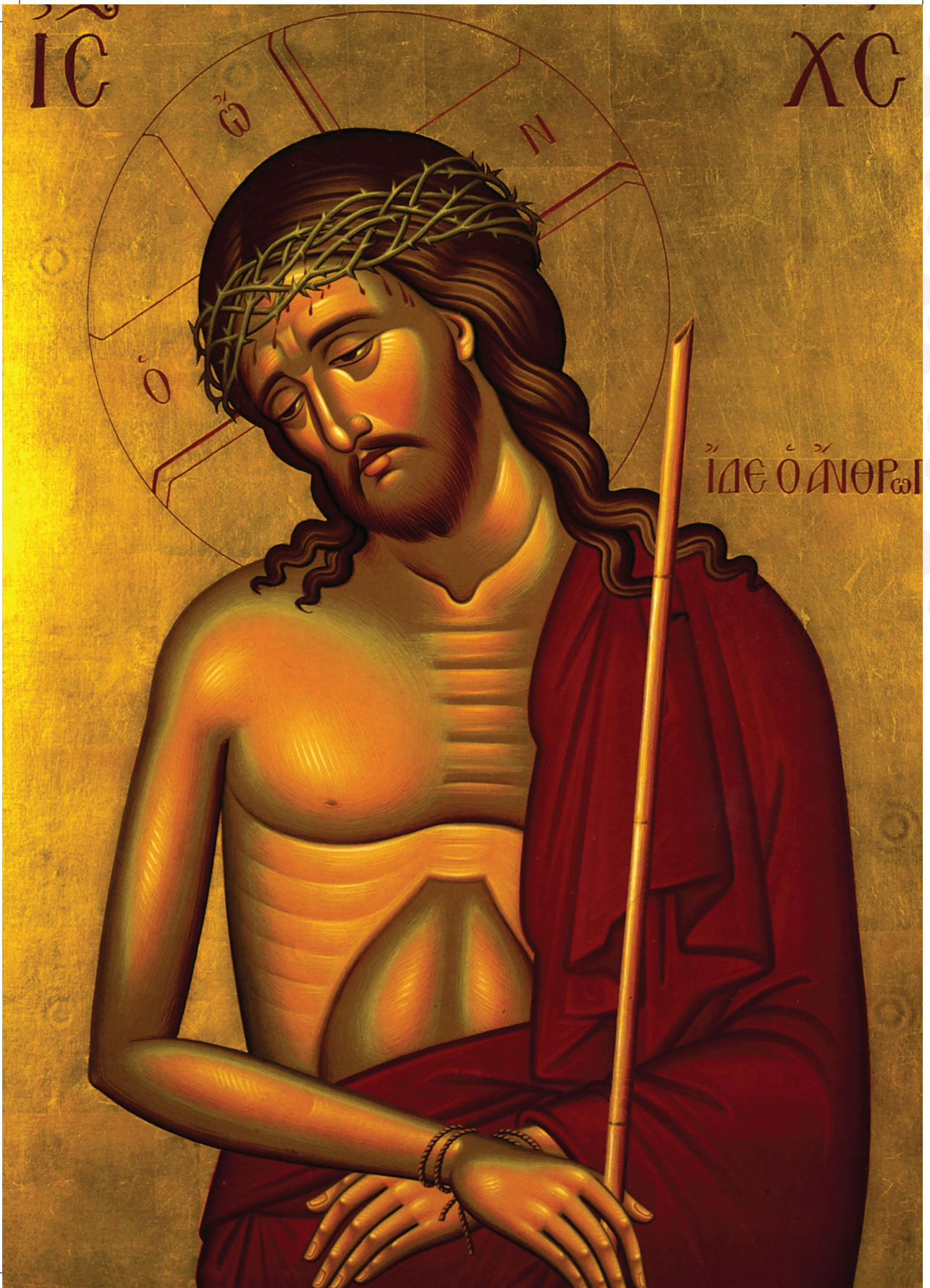
**Saturday, February 25, 7:30pm**

Catalina Foothills High School, Tucson

**Sunday, February 26, 3:00pm**

Grace St. Paul's Episcopal Church, Tucson







# Russian Masters

*Featuring True Concord Choir and Soloists*

The mysticism of Mother Russia is evoked in the hypnotic *Passion Week* by Rimsky-Korsakov protégé Alexander Gretchaninoff. Russia's rich choral tradition, famous for its deep basses, is also represented on the program by works of Rachmaninoff and Tchaikovsky. This profoundly spiritual music for a *cappella* choir is Russian romanticism at its finest.

**Thursday, March 23, 7:30pm**

Christ the King Episcopal Church, northwest Tucson

**Friday, March 24, 7:00pm**

St. Francis in the Valley Episcopal Church, Green Valley

**Saturday, March 25, 7:30pm**

Holy Resurrection Orthodox Church, east Tucson

**Sunday, March 26, 3:00pm**

Grace St. Paul's Episcopal Church, Tucson



# ABOUT

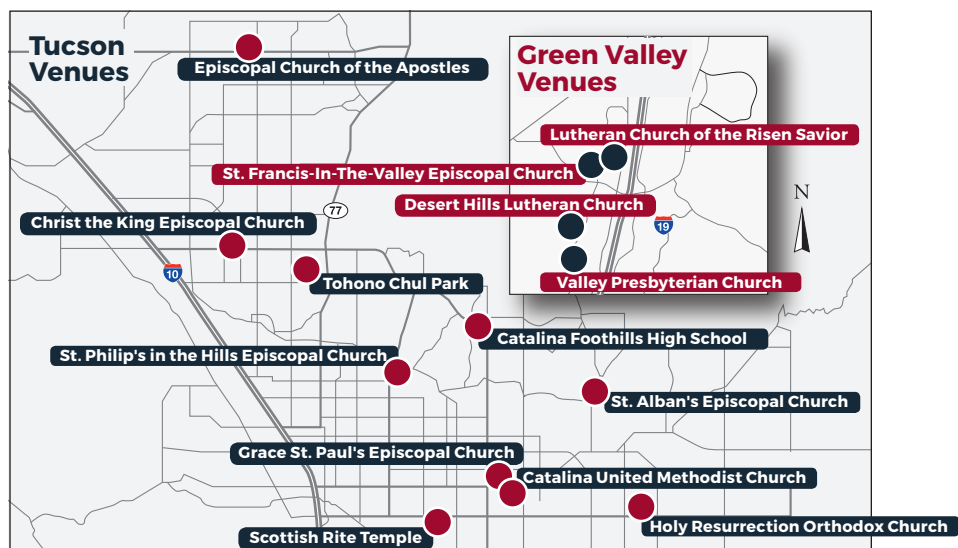
## True Concord Voices & Orchestra

True Concord Voices & Orchestra has emerged as Tucson's most illustrious cultural export. Under the direction of Music Director Eric Holtan, True Concord engages singers and instrumentalists from across the country, performing repertoire that spans the celebrated masterworks of centuries past to world premieres by America's finest composers.

Last season, True Concord made its Lincoln Center debut, which was hailed as a "highly polished...wonderful performance." Its album, *Far in the Heavens*, garnered two GRAMMY nominations and won for Best Contemporary Classical Composition.

"True Concord" comes from Shakespeare's Sonnet No. 8, in which he describes the emotional impact of music. The original 14th century meaning of 'concord' is 'hearts together' — something we strive to achieve in our music-making between composer, performer and listener.

**THANK YOU DOROTHY DYER VANEK**  
**2016-2017 SEASON SPONSOR!**





Please use the grid below to check each date you will attend and indicate the number of tickets for the seating you want. Subtotal and complete the form on the right side.

### Single Ticket Prices

\$40 Premium Seating

\$25 General Seating

\$30 Green Valley (GV)

All Seats

Students \$5 at the door

#### Music of the Four Elements

- ☐ Thursday October 13  
☐ Friday October 14 - GV  
☐ Saturday October 15  
☐ Sunday October 16

\_\_\_\_\_ x \$40 = \$ \_\_\_\_\_  
 \_\_\_\_\_ x \$25 = \$ \_\_\_\_\_  
 \_\_\_\_\_ x GV \$30 = \$ \_\_\_\_\_

#### Bach's *Magnificat*

- ☐ Thursday November 17  
☐ Friday November 18 - GV  
☐ Saturday November 19  
☐ Sunday November 20

\_\_\_\_\_ x \$40 = \$ \_\_\_\_\_  
 \_\_\_\_\_ x \$25 = \$ \_\_\_\_\_  
 \_\_\_\_\_ x GV \$30 = \$ \_\_\_\_\_

#### Christmas Lessons & Carols

- ☐ Thursday December 8  
☐ Friday December 9 - GV  
☐ Saturday December 10  
☐ Sunday December 11 Afternoon  
☐ Sunday December 11 Evening

\_\_\_\_\_ x \$40 = \$ \_\_\_\_\_  
 \_\_\_\_\_ x \$25 = \$ \_\_\_\_\_  
 \_\_\_\_\_ x GV \$30 = \$ \_\_\_\_\_

#### Mendelssohn's *Elijah*

- ☐ Friday January 27  
☐ Saturday January 28 - GV  
☐ Sunday January 29

\_\_\_\_\_ x \$40 = \$ \_\_\_\_\_  
 \_\_\_\_\_ x \$25 = \$ \_\_\_\_\_  
 \_\_\_\_\_ x GV \$30 = \$ \_\_\_\_\_

#### Monteverdi's *Vespers*

- ☐ Friday February 24 - GV  
☐ Saturday February 25  
☐ Sunday February 26

\_\_\_\_\_ x \$40 = \$ \_\_\_\_\_  
 \_\_\_\_\_ x \$25 = \$ \_\_\_\_\_  
 \_\_\_\_\_ x GV \$30 = \$ \_\_\_\_\_

#### Russian Masters

- ☐ Thursday March 23  
☐ Friday March 24 - GV  
☐ Saturday March 25  
☐ Sunday March 26

\_\_\_\_\_ x \$40 = \$ \_\_\_\_\_  
 \_\_\_\_\_ x \$25 = \$ \_\_\_\_\_  
 \_\_\_\_\_ x GV \$30 = \$ \_\_\_\_\_

Subtotal = \$ \_\_\_\_\_

### SUBSCRIPTION PLANS

*Purchase a full 6-performance package and save the equivalent of one single ticket.*

**CHECK SPECIFIC  
CONCERTS ON THE  
LEFT SIDE OF THIS  
PAGE**

#### FULL SEASON SUBSCRIPTION

- ☐ Six Concerts: Premium Seating \_\_\_\_\_ x \$200 = \$ \_\_\_\_\_  
☐ Six Concerts: General Seating \_\_\_\_\_ x \$125 = \$ \_\_\_\_\_  
☐ Six Concerts: Green Valley \_\_\_\_\_ x \$150 = \$ \_\_\_\_\_

#### FLEXIBLE SUBSCRIPTION

- ☐ Five Concerts: Premium Seating \_\_\_\_\_ x \$175 = \$ \_\_\_\_\_  
☐ Five Concerts: General \_\_\_\_\_ x \$110 = \$ \_\_\_\_\_  
☐ Five Concerts: Green Valley \_\_\_\_\_ x \$125 = \$ \_\_\_\_\_  
☐ Four Concerts: Premium Seating \_\_\_\_\_ x \$150 = \$ \_\_\_\_\_  
☐ Four Concerts: General \_\_\_\_\_ x \$ 95 = \$ \_\_\_\_\_  
☐ Four Concerts: Green Valley \_\_\_\_\_ x \$100 = \$ \_\_\_\_\_  
☐ Three Concerts: Premium Seating \_\_\_\_\_ x \$115 = \$ \_\_\_\_\_  
☐ Three Concerts: General \_\_\_\_\_ x \$ 70 = \$ \_\_\_\_\_  
☐ Three Concerts: Green Valley \_\_\_\_\_ x \$ 75 = \$ \_\_\_\_\_

Subtotal = \$ \_\_\_\_\_

Oct 15 Tohono Chul Admission = \$ \_\_\_\_\_  
 (\$10 ea. Garden Admission)

Total from left side = \$ \_\_\_\_\_

Tax-deductible contribution = \$ \_\_\_\_\_

Handling fee = \$ 3.00

**Total = \$ \_\_\_\_\_**

Name: \_\_\_\_\_

Address: \_\_\_\_\_

City/State/Zip: \_\_\_\_\_

Phone: \_\_\_\_\_ Email: \_\_\_\_\_

Method of payment: ☐ Check \* ☐ Credit

Card Card Number: \_\_\_\_\_

Exp. Date: \_\_\_\_ CV Code: \_\_\_\_ Billing Zip: \_\_\_\_\_

Signature: \_\_\_\_\_

Complete the form on this page if ordering tickets by mail. You may also buy tickets online at [trueconcord.org](http://trueconcord.org) or by phone at 520.401.2651.

\*Make checks payable to **True Concord**

**True Concord**

PO Box 64912

Tucson, AZ 85728

[trueconcord.org](http://trueconcord.org) | 520.401.2651

**true**  
**concord**  
 voices & orchestra





*You'll be blown away.*

PO Box 64912

Tucson, Arizona 85728-4912

[trueconcord.org](http://trueconcord.org)

520.401.2651



Non Profit Org  
US Postage  
PAID  
Tucson, AZ  
Permit #2216

## SEASON CORPORATE SPONSORS



## PARTNERS

